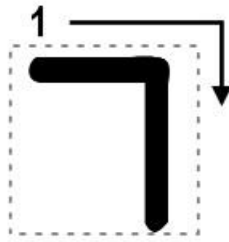


Hebrew Writing 14

Remember to work from right to left. Start with the Resh on the top right and trace that one first. Then move to the one to its left. When you get to the end of the row, go back to the bottom right and trace that letter.

“R” as in rain



Trace the letter outline:



Genesis 1:1

בְּרֵאשִׁית, בָּרָא אֱלֹהִים, אֶת הַשָּׁמַיִם, וְאֶת הָאָרֶץ.