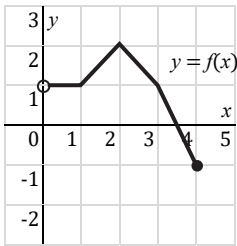


Quiz 161

Use the graph of f to answer the question.



1. Find the domain and range of $f(x)$.

2. $f(2) + f^{-1}(-1) = ?$

Solve.

3. Is the table linear, quadratic, or exponential?

x	0	1	2	3	4
y	9	5	1	-3	-7

4. Suppose y varies inversely with x , and $y = 2$ when $x = 8$. Find x when $y = 4$.

5. Write the explicit formula of the sequence 5, 8, 11, 14, 17, ...